

Care4Kids

Improving Health Outcomes for Children





What is Care4Kids?



New Medicaid Program beginning Jan. 1, 2014

- Provides comprehensive, coordinated care for children in Out-of-Home Care (OHC)
 - Recognizes unique needs of children in OHC
 - Reflects trauma-informed principles
- Builds relationships between children and their medical providers
 - Medical providers get to know children and their specific needs so that they may provide better care
 - Children receive consistent care that is coordinated between providers and services
- Administered by Children's Hospital of Wisconsin and Children's Community Health Plan in southeast area of the state.



Care4Kids Benefits

Improves Quality

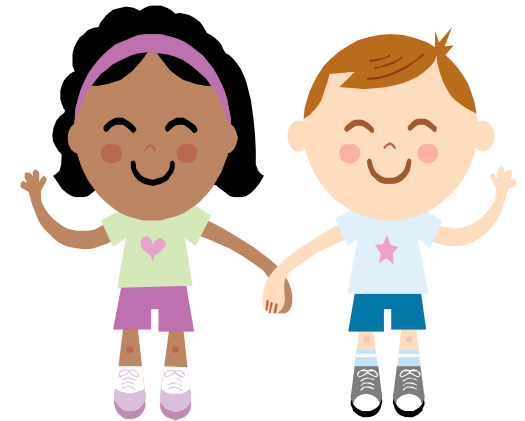
- Healthcare is provided by professionals trained in the unique needs of children in OHC
- Healthcare is managed
 - Organized and coordinated by Health Care Coordinator (HCC)
 - Comprehensive Health Care Plan (CHCP) is developed and implemented

Improves Access

- Healthcare is accessible
 - Providers are available throughout region
- Healthcare is timely
 - **Primary care** providers give scheduling priority to Care4Kids children

Improves Outcomes

- Physical health
- Mental health
- Resiliency
- Stronger natural support systems



Care4Kids Benefits

- An **OHC Health Screen** within 2 business days
- A **Comprehensive Initial Health Assessment** within 30 days
- **Coordinated health care** from a Health Care Coordination Team
- A **Comprehensive Health Care Plan** tailored to the child's individual health needs
- **Ongoing Health Care** for an additional **12 months** after discharge from OHC
- **All Medicaid-covered services**
- **Dental care**
- **Vision care**
- More frequent **well child check ups**
- A **developmental or behavioral health screen**
- A **mental health evaluation** (if needed)





Care4Kids Eligibility



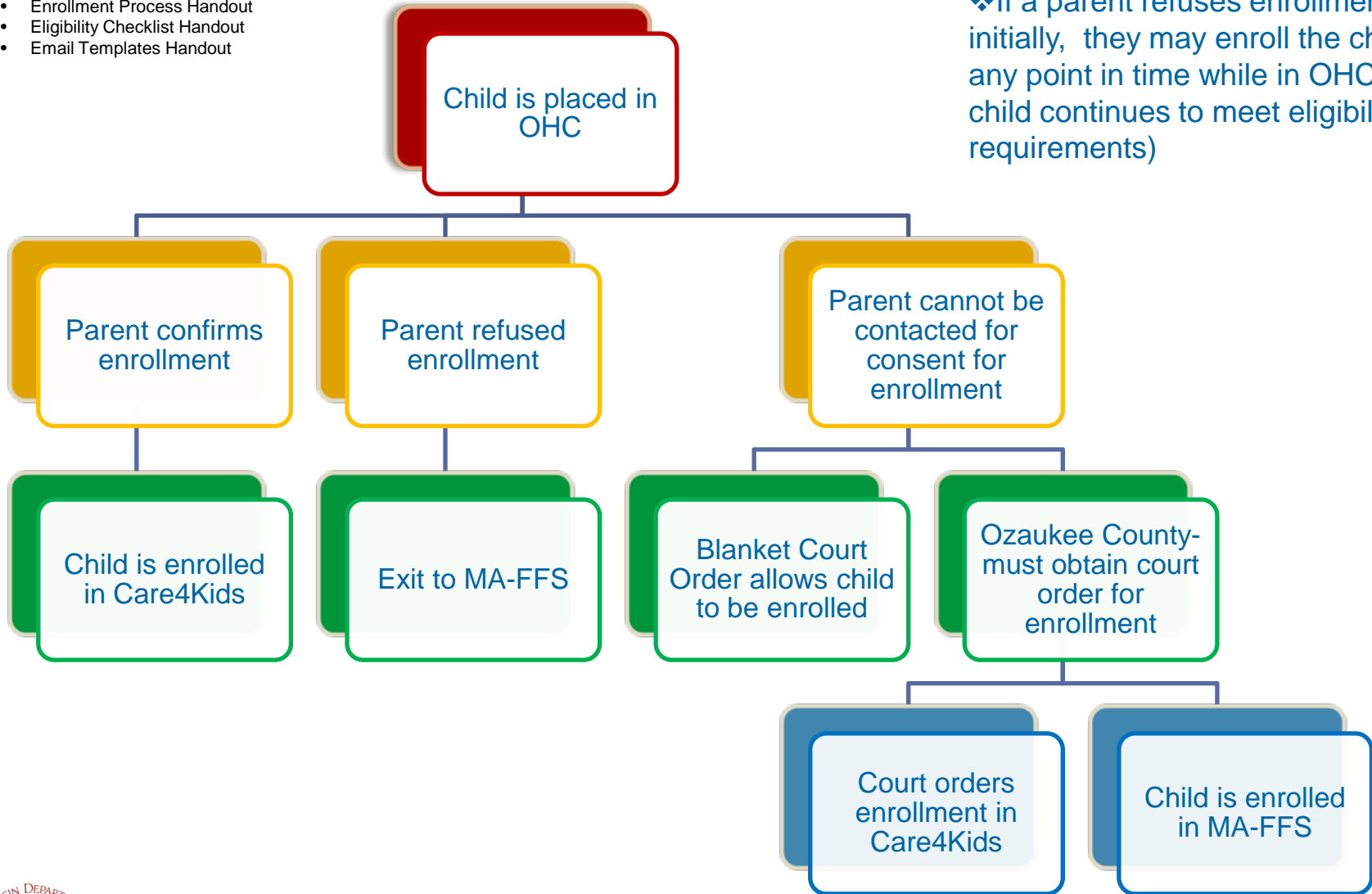
- **Initially**, children entering OHC through child protective services
 - Children currently in OHC will be enrolled at a later time
 - Children entering OHC through juvenile justice system will be enrolled at a later time
- Children placed in an eligible setting:
 - Shelter Care and Assessment Centers
 - Unlicensed Providers, including relatives
 - Court-Ordered Kinship home
 - Level 1-5 foster home
 - Group home
- Children placed in the following counties:
 - Milwaukee
 - Kenosha
 - Racine
 - Ozaukee
 - Washington
 - Waukesha
- Children Not Participating in Milwaukee WrapAround
 - Children participating in WrapAround will be enrolled at a later time

Children of a teen parent in out-of-home care, including newborns, must be court-ordered into care to be eligible for Care4Kids.

Enrollment

- Enrollment Process Handout
- Eligibility Checklist Handout
- Email Templates Handout

❖ If a parent refuses enrollment initially, they may enroll the child at any point in time while in OHC (if child continues to meet eligibility requirements)





Out-of-Home Care Health Screen



- Medical appointment completed within 2 business days of entering care
- Completed at Child Advocacy Center
 - The Physician or Nurse Practitioner completing the exam will have expertise in caring for children entering OHC
- Caseworker and Out-of-Home Care Provider must coordinate to ensure the screen occurs.



Out-of-Home Care Health Screen



- Screen is **estimated** to take 45 minutes for children 12 and under, and 1 hour for children over the age of 12. The Screen will:
 - Identify acute health concerns
 - Check for injuries indicating abuse or neglect
 - Screen for communicable diseases
 - Ensure child has necessary medication and/or medical equipment

- If child is taken into custody while in the hospital, urgent care or emergency room, the screen **MUST** still be scheduled.
 - Newborns may be exempt

Child Advocacy Center (CAC)

Provides assessments to children who may have been harmed

- Goal is to protect children from further abuse and provide resources to help them heal

Medical Clinic staffed by pediatricians and other health care providers

- Specialize in caring for children who have suffered maltreatment or who are in OHC
- Trained to recognize signs of abuse and neglect
- Interact with children in ways that do not cause additional trauma to the child





CAC Locations



Child Protection Center, Milwaukee

1020 N. 12th Street, 5th Floor

Milwaukee, WI

Phone: (414) 277-8980

Fax: (414) 277-8969

Hours: 8am-5:30pm, Monday-Thursday, 8am-5pm Friday

<http://www.chw.org/display/PPF/DocID/44076/router.asp>

Kenosha County Child Advocacy Center

8500 75th Street, Suite 101

Kenosha, WI

Phone: (262) 653-2266

Fax: (262) 653-2277

Hours: 8:15am-4:45pm, Monday-Friday

<http://www.chw.org/display/PPF/DocID/44079/Nav/1/router.asp>

Racine County Child Advocacy Center

2405 Northwestern Avenue, Suite 205

Racine, WI

Phone: (262) 898-7970

Fax: (262) 635-6621

Hours: 8:30am-5:00pm, Monday-Friday

<http://www.chw.org/display/PPF/DocID/44081/Nav/1/router.asp>

The C.A.R.E. Center

726 N. East Avenue

Waukesha, WI 53186

Phone: (262) 522-3680

Fax: (262) 522-3681

Hours: 9 am to 4:30 pm, Monday-Thursday

<http://www.fswaukesha.org/#!/the-care-center/c1rhu>

Fox Valley Child Advocacy Center

325 N. Commercial Street, Suite 400

Neenah, WI

Phone: (920)969-7930

Fax: (920)969-7975

Hours: 8:30am-6:30pm, Monday 8:30am-4:30pm, Tuesday-Friday

<http://www.chw.org/display/PPF/DocID/44080/Nav/1/router.asp>

Health Care Coordination Team

- **Health Care Coordinators (HCC):**

- Registered Nurse (RN) or an Advanced Practice Social Worker (APSW)
 - Experience working with children with special needs or with children in OHC
- Oversees and ensures access to medical services for children in Care4Kids
- Develops Comprehensive Health Care Plan (CHCP)
- Monitors status and coordinates revisions of CHCP
- Collects available medical history and distributes to medical providers
- Provides OHC Health Screen findings to primary medical providers
- Collaborates with child welfare workers
- Assists child welfare workers and OHC providers as needed in finding medical providers and scheduling appointments timely

- **Outreach Coordinators:**

- Assist Health Care Coordinators with duties related to service coordination, such as scheduling appointments



Health Care Coordination Team



Accessibility

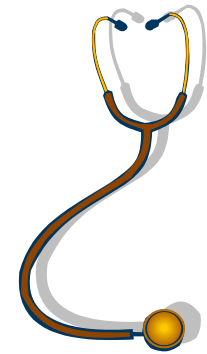
- Available during regular business hours
 - **Phone: 855-371-8104**
- Medical questions and concerns should be directed to the child's primary care physician

Comprehensive Initial Health Assessment

- Thorough check-up from medical provider completed within 30 days of the child entering care

- Preferably completed at Center of Excellence
 - Medical providers have expertise in caring for children in OHC
 - Assessment is estimated to take an hour

- The Assessment will include:
 - Provider reviews any prior health history available
 - Provider thoroughly reviews medical conditions and symptoms with the child, OHC provider, and the child's family
 - Physical exam
 - Review of prescribed medications
 - Screening to identify developmental, mental health, or dental concerns
 - Evaluates whether immunizations are up-to-date and needed lab work is obtained
 - Referrals to subspecialists, mental health providers, and/or other services and supports if necessary



Is a child required to be seen at a CoE?

It is preferred that a child is seen at a CoE:

1. The CoE has specific training in working with children in OHC
2. The CoE will prioritize appointments for children in Care4Kids
 - The Comprehensive Initial Health Assessment will be able to be scheduled within 30 days



At the time the appointment is being scheduled, the person (Out-of-Home Care Provider, Child Welfare worker, parent/legal guardian) making the appointment **MUST** state the child is enrolled in Care4Kids.

- Calling to schedule the appointment should be done early in the 30 day timeframe to assure timely scheduling and completion

Centers of Excellence

Primary care medical clinic with a special interest in providing health care to children in OHC

Providers have expertise in caring for children in OHC

- Understand enhanced health care needs of population
- Use trauma-informed principles

Prioritizes appointments for Care4Kids children, including:

- 30 day Comprehensive Initial Health Exam
- Well child check-ups
- Acute care exams
- Specialty care referrals
- Any needed immunizations

Partners with Care4Kids Health Care Coordination

- Ensures information is shared amongst team
- Ensures children's health outcomes are met



Health Care Team and Comprehensive Health Care Plan

■ Comprehensive Health Care Plan (CHCP)

- Developed by Health Care Coordination Team
 - Shared and updated with Health Care Team
- Created within 60 days of entering OHC
- Based on information collected during OHC Health Screen, Comprehensive Initial Health Assessment, other medical history and input from the team



■ Health Care Team

- Child welfare caseworkers
- Health care professionals
- OHC Providers
- Child's family
- Other important adults in the child's life
- Coordinated and facilitated by the Health Care Coordination Team

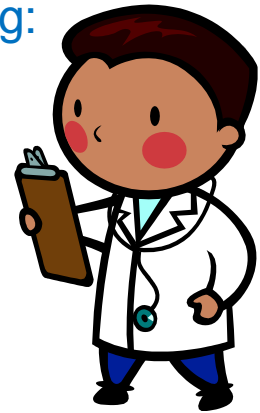
■ Documentation

- Scan into eWiSACWIS
- Care4Kids Database
- Copies to Health Care Team

Mental Health Evaluations

■ Children should be referred for mental health evaluations as indicated based on identified concerns

- Concerns could be identified from multiple sources including:
 - CANS assessment
 - the OHC Health Screen
 - the Comprehensive Initial Health Assessment
 - the treatment planning process
 - At any time the health care team deems appropriate



■ If there is a behavioral health crisis situation, county or agency procedures should be followed

■ The Comprehensive Health Care Plan will include an Action Plan for behavioral health management (if appropriate)

What to do in a Crisis or After Hours?

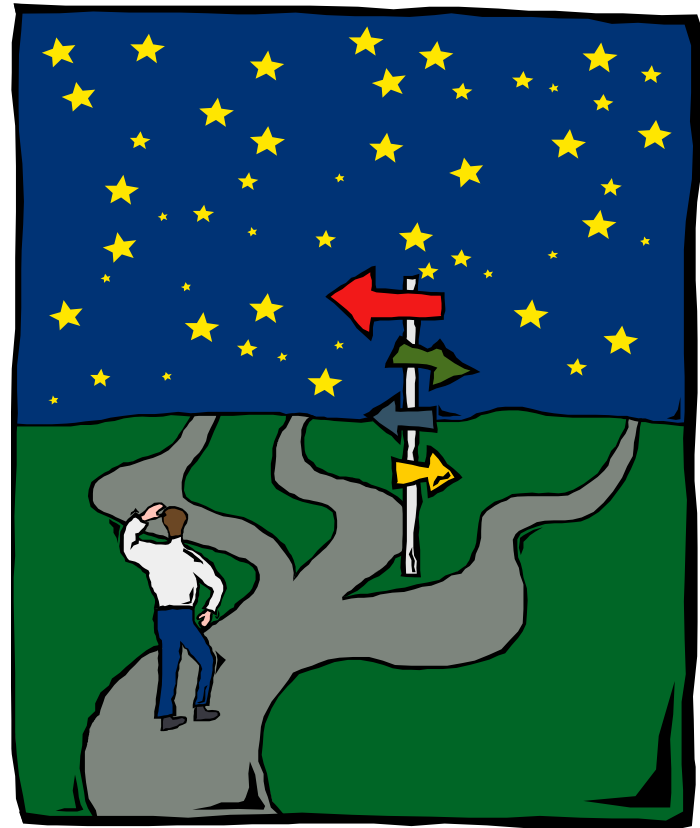
- In a crisis situation, the OHC Provider should follow agency or county procedures
- The CHCP will include a crisis plan when appropriate
- After-hours medical concerns can be directed to Nurse Triage line
 - **877-257-5861**
 - **Available 24/7**



Coordination of Services and Programs

The Child Welfare Worker is responsible for ensuring the HCC is aware of the child's involvement in any of the programs listed below:

- Comprehensive Community Services
- Children's Long-Term Support Waivers
- Family Support Program
- Birth to 3 Program
- Transitioning to Adult Services
- Coordinated Services Team



Change of Placement

Child Welfare Worker's Responsibility:

- Enter Change of Placement in eWiSACWIS
- Email the Enrollment Specialist if the child is no longer eligible (Care4kids@automated-health.com) if the child becomes ineligible for Care4Kids:
- If the answer is yes to any of the questions below the Enrollment Specialist needs to be informed:
 - Is the child residing outside of the six counties?
 - Is the child in an ineligible placement setting (secure detention, RCC)?
 - Is the child enrolled in Milwaukee WrapAround?
- Also notify the Health Care Coordinator



Child Becomes Ineligible

There are several situations where a child may become ineligible to continue to receive the Care4Kids benefit:



- Child no longer resides in one of the six counties
- Child moves into an ineligible setting
 - Residential Care Center
 - Secure Setting (after 30 days)
 - Institutional Setting (after 30 days)
- Parent/legal guardian contacts the Enrollment Specialist to disenroll their child from Care4Kids
- The child enrolls in Milwaukee WrapAround
- The youth enrolls in FamilyCare or IRIS

12 Month Care4Kids Extension

The child or youth:

- **Must** continue to be Medicaid Eligible
- **Must** continue to reside in one of the six counties
- **Is Not** enrolled in adult long-term care programs; FamilyCare or IRIS
- **Does not need** to have an open CPS case for the entire 12 month extension
- Youth that have **“aged out”** of care are eligible for the 12 month extension
 - Youth must meet the criteria above to remain eligible





12 Month Care4Kids Extension



Prior to Discharge from OHC:

- The HCC will develop a health care transition plan
 - Plan will be created with the team
 - Plan will include any changes in providers
 - Plan will ensure the child/youth's healthcare needs are being met

Prior to Discharge from Care4Kids:

- The HCC will be monitoring the 12 month extension
- The HCC will develop a health care transition plan
 - Plan will be created with the team
 - Plan will include any changes in providers
 - Plan will ensure the child/youth's healthcare needs are being met

Other Situations

Child is no longer eligible for Care4Kids:

- Enrollment Specialist (Care4kids@automated-health.com) MUST be emailed by child welfare worker

Child is Adopted:

- Enrollment Specialist MUST contact adoptive parents regarding continued enrollment in Care4Kids

Transfer of Guardianship:

- Enrollment Specialist MUST contact legal guardian regarding continued enrollment in Care4Kids





Handouts



- Roles and Responsibilities Flowchart
- Handout to Parent/Legal Guardian
- Enrollment Process
- Enrollment Process Program Assignment Guide
- Enrollment Email Templates
- Eligibility Checklist
- Child Advocacy Centers Information
- Centers of Excellence Information
- Health Care Coordination Information



Future Phases

After Initial Roll-Out

- Include Children/Youth Currently in Out of Home Care
- Include Youth involved in Juvenile Justice
- Include Children/Youth enrolled in Milwaukee WrapAround





Additional Resources



Children's Community Health Plan Provider Directory:

www.childrenschp.com

- CCHP will have a separate link on the website for the list of CoEs and CACs.

Health Care Coordinator Team Phone Number: 855-371-8104

24/7 Nurse Triage Phone Number: 877-257-5861

DCF Care4Kids Webpage:

<http://dcf.wisconsin.gov/children/foster/care4kids/default.htm>

Katie Sepnieski, MSW

Department of Children and Families

608-266-9024

Katie.Sepnieski@wi.gov

